

# Vernon Elementary School District

Apache County

Efficiency peer groups 11 and T-11, Achievement peer group 20

Legislative district(s): 7

District size, location:

Very small, Rural

Students attending:

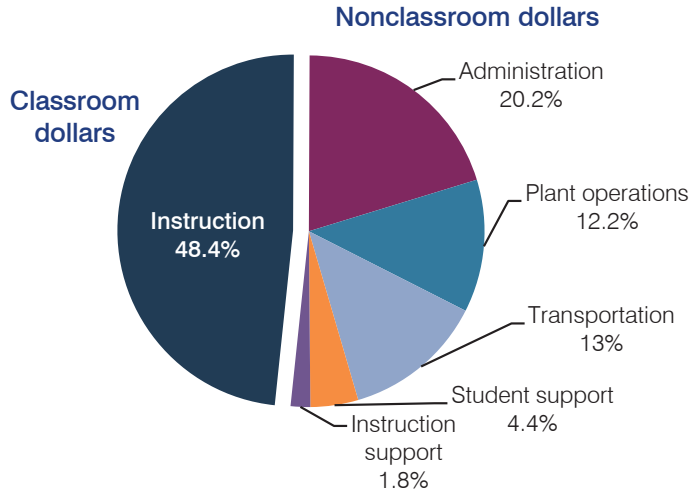
102

Number of schools:

1

## OPERATIONAL EFFICIENCY

### Spending by operational area



### 5-year spending trend

Total spending per pupil decreased by 2 percent. Spending in the classroom varied year to year, increasing overall from 38.3 to 48.4 percent. Spending on most nonclassroom areas also varied year to year, as is common for very small districts. Overall, plant operations decreased substantially and spending on transportation and instruction support increased.

### Cost measures relative to peer averages

Operational area	Measure	District	Peer average	State average
Administration	Cost per pupil	\$3,362	\$2,572	\$746
	Students per administrator	21	30	67
Plant operations	Cost per square foot	\$8.86	\$6.59	\$6.03
	Square footage per student	229	343	153
Food service	Cost per meal equivalent	N/A	\$4.93	\$2.58
Transportation	Cost per mile	\$1.14	\$1.64	\$3.55
	Cost per rider	\$1,392	\$1,184	\$1,015

### Per pupil spending by operational area

	District		Peer average	State average	National average
	2012	2013	2013	2013	2011
<b>Total</b>	<b>\$14,633</b>	<b>\$16,638</b>	<b>\$15,203</b>	<b>\$7,496</b>	<b>\$10,658</b>
<b>Classroom dollars</b>	<b>6,711</b>	<b>8,047</b>	<b>7,647</b>	<b>4,031</b>	<b>6,520</b>
<b>Nonclassroom dollars:</b>	<b>7,922</b>	<b>8,591</b>	<b>7,556</b>	<b>3,465</b>	<b>4,138</b>
Administration	2,678	3,362	2,572	746	1,138
Plant operations	1,656	2,034	2,148	924	1,015
Food service	2	0	851	396	412
Transportation	1,767	2,161	1,056	369	452
Student support	1,091	726	548	582	593
Instruction support	728	308	381	448	528

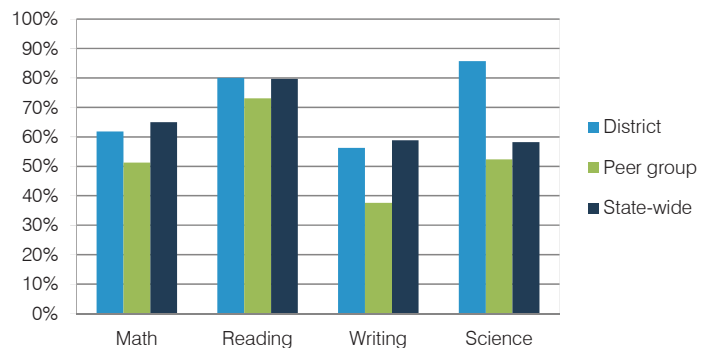
## STUDENT ACHIEVEMENT, TEACHER MEASURES, AND FINANCIAL ASSESSMENT

### ADE-reported district and school letter grades

District grade: **B**

Grade	Number of schools	Percentage of schools
A	0	0%
B	1	100%
C	0	0%
D	0	0%
F	0	0%
Not rated	0	0%

### Students who met state standards (AIMS)



### Student and teacher measures

Measure	District	Peer average	State average
Attendance rate	93%	94%	94%
Graduation rate (2012)	N/A	N/A	N/A
Poverty rate (2012)	37%	38%	25%
Students per teacher	9.3	15.1	18.3
Average teacher salary	\$35,496	\$44,190	\$45,264
Amount from Proposition 301	\$2,200	\$3,324	\$3,784
Average years of teacher experience	11.0	11.1	10.9
Percentage of teachers in first 3 years	0%	20%	19%

### Financial stress assessment

Overall financial stress level: **Moderate**

Measure: 2011 through 2013

Assessment

Number of students attending district	Small school adjustment
Spending exceeded operating/capital budgets	No overspending
Spending increase election results	No election held
Operating reserve percentage (max. 4%), trend	0.3%, Varying
Years of capital reserve held	1 to 3 years
Current financial and internal control status	Compliant

Stress level

